



# PERFECT 16

MICRO-PARTICLE IN-DUCT AIR FILTRATION SYSTEM

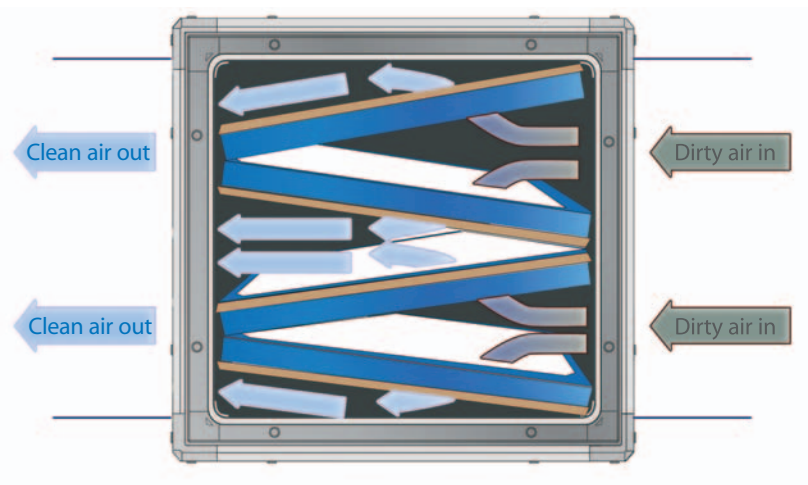


The IQAir Perfect 16 sets a new standard for commercial air cleaning. It is the first in-duct air cleaning system to remove over 95% of micro-particles with virtually no reduction in airflow. With its advanced Micro-Fiber Filtration Technology and V-2 design, the IQAir Perfect 16 is the perfect in-duct air filtration system for any commercial and light industrial environment. And best of all it can be installed in virtually any HVAC ductwork.

# The IQAir Perfect 16

## The Perfect 16 ID-Series Features:

- Ultra-high efficiency: MERV 16 certified (ASHRAE 52.2) 95% efficient at 0.3 microns
- Ultra-low air resistance:  $\geq 0.18''$  w.c. ( $\geq 54$  Pa) at rated airflow
- Ultra-long filter life: 3 years based on 50% use
- Easy installation: Requires no electrical connections
- Low maintenance
- Rugged steel cabinet: Can be easily hung (with optional hanging kit)
- Medical grade finish: Powder coated galvanized steel
- Fully insulated for installation in unconditioned environments
- Swiss made quality: 10 year warranty



## The V2 Difference: Perfect Airflow

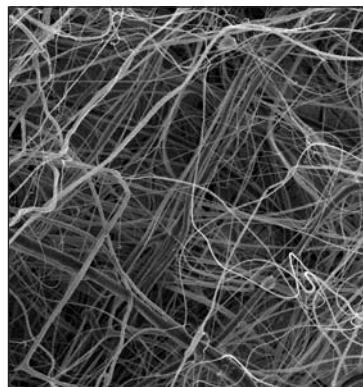
Most air filters have a single flat surface that fits squarely in the housing of the system. The Perfect 16's filters are placed in a double "V" shape. The V2 design allows the Perfect 16 to use over 170 square feet of filter media. This is 50 times more filtration material than that of an ordinary HVAC filter. The additional surface area allows more air to pass through the system. This innovative concept makes a big difference in how much air the Perfect 16 can clean.

## Advanced Micro-Fiber Filtration Technology

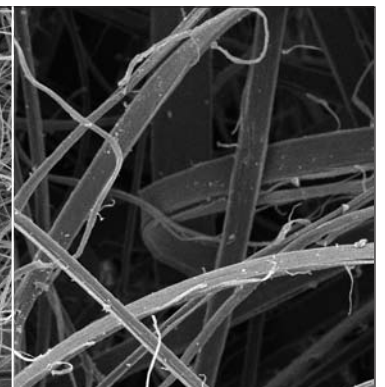
The IQAir Perfect 16 utilizes Advanced Micro-Fiber Filtration Technology. The Perfect 16's filter fibers are 10 times thinner than those used in standard air filters. This allows air to easily pass through the fibers, while the ultra-fine threads create an almost impenetrable barrier for pollution particles. The result is an air filter that sets a new standard for air cleaning efficiency and airflow.

*100x magnified images generated on scanning electron microscope by Washington University School of Medicine.*

Perfect 16 Micro-Fibers



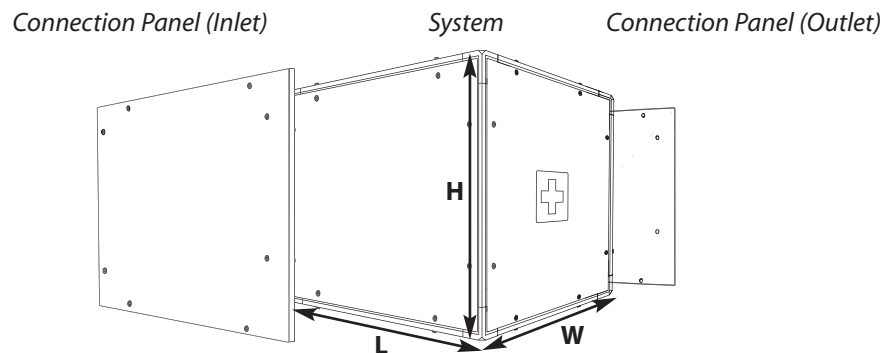
Conventional air filter fibers



## How to Use the IQAir Perfect 16

1. Select the desired room(s) which need clean air.
2. Determine which HVAC supply branch provides air to the desired room(s).
3. Install the ID-2225 or ID-2530 on the supply side of the desired branch, based on desired pressure drop.
4. Balance other duct run(s) as necessary.

### System Configuration

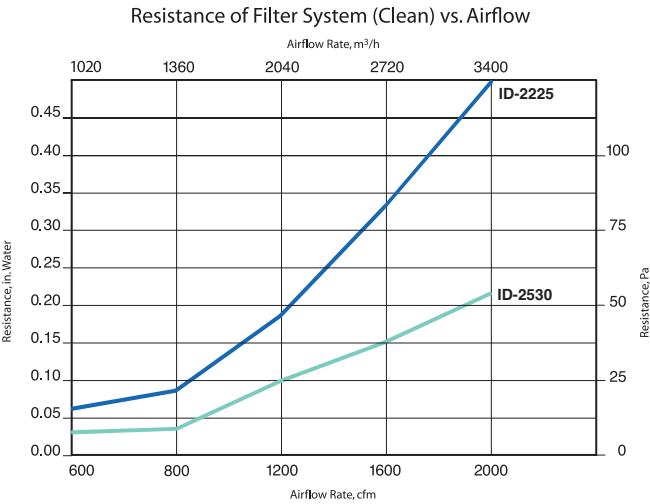


### Product Specifications

	<b>Perfect 16 ID-2225</b>	<b>Perfect 16 ID-2530</b>
Dimensions	21.25"W x 25.25"L x 21.25"H	25.25"W x 29.25"L x 21.25"H
Weight	59 lbs	74 lbs
Power Requirements	None, no electrical parts	None, no electrical parts
Rating	MERV 16 rated at 295 fpm (1,180 cfm)	MERV 16 rated at 192 fpm (1,968 cfm)
Efficiency	≥95% for particles 0.3µm and greater ≥75% for particles 0.003 µm and greater	≥95% for particles 0.3 µm and greater ≥75% for particles 0.003µm and greater
Airflow	Maximum recommended airflow is 1,200 cfm	Maximum recommended airflow is 2,000 cfm
Pressure Drop	0.17" wc at 1,180 cfm	0.24" wc at 1,968 cfm
Insulation	Pre-installed, fiberglass-free aluminum-foam insulation	Pre-installed, fiberglass-free aluminum-foam insulation
Minimum Efficiency Reporting Value (MERV)	MERV 16 @ 498 fpm (2.5 m/s)	MERV 16 @ 492 fpm (2.5 m/s)
Rated Airflow	1400 cfm (2380m/h)	2000 cfm (3400 m/h)
Composite Average Efficiency	E1 (0.3 – 1.0 µm) = 96.7% E2 (1.0 – 3.0 µm) = 97.7% E3 (3.0 – 10.0 µm) = 98.5%	E1 (0.3 – 1.0 µm) = 96.9% E2 (1.0 – 3.0 µm) = 97.8% E3 (3.0 – 10.0 µm) = 98.3%
Media Area	170 sq ft. (15.8 m/h)	210 sq ft. (19.5 m/h)

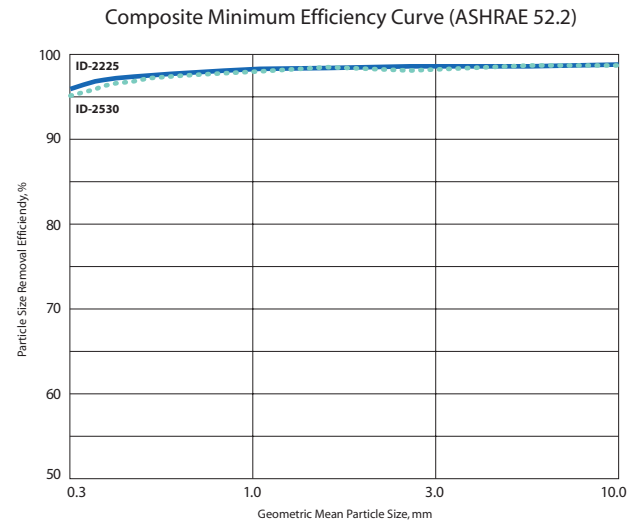
# Comparative Tables and Graphs

cfm (m³/h)	Supply Airflow vs. Filter System Resistance			
	ID-2225		ID-2530	
	in H <sub>2</sub> O	Pa	in H <sub>2</sub> O	Pa
600 (1020)	0.06	14	0.03	8
800 (1360)	0.09	21	0.04	12
1200 (2040)	0.18	44	0.10	24
1600 (2720)	0.33	82	0.15	38
2000 (3400)	0.49	122	0.22	54



Composite Minimum Efficiency Table (%)		
Size Range (µm)	Efficiency ID-2225*	Efficiency ID-2530*
0.30 – 0.40	96.2	94.9
0.40 – 0.55	96.6	95.9
0.55 – 0.70	97.0	96.3
0.70 – 1.00	97.2	96.6
1.00 – 1.30	97.4	96.8
1.30 – 1.60	97.5	97.2
1.60 – 2.20	97.8	97.5
2.20 – 3.00	98.0	97.7
3.00 – 4.00	98.3	98.0
4.00 – 5.50	98.4	98.5
5.50 – 7.00	98.6	98.1
7.00 – 10.00	98.6	98.7

\*Perfect 16 ID-2225 at 1400 cfm  
\*Perfect 16 ID-2530 at 2000 cfm



Contact your Authorized IQAir Installer: